

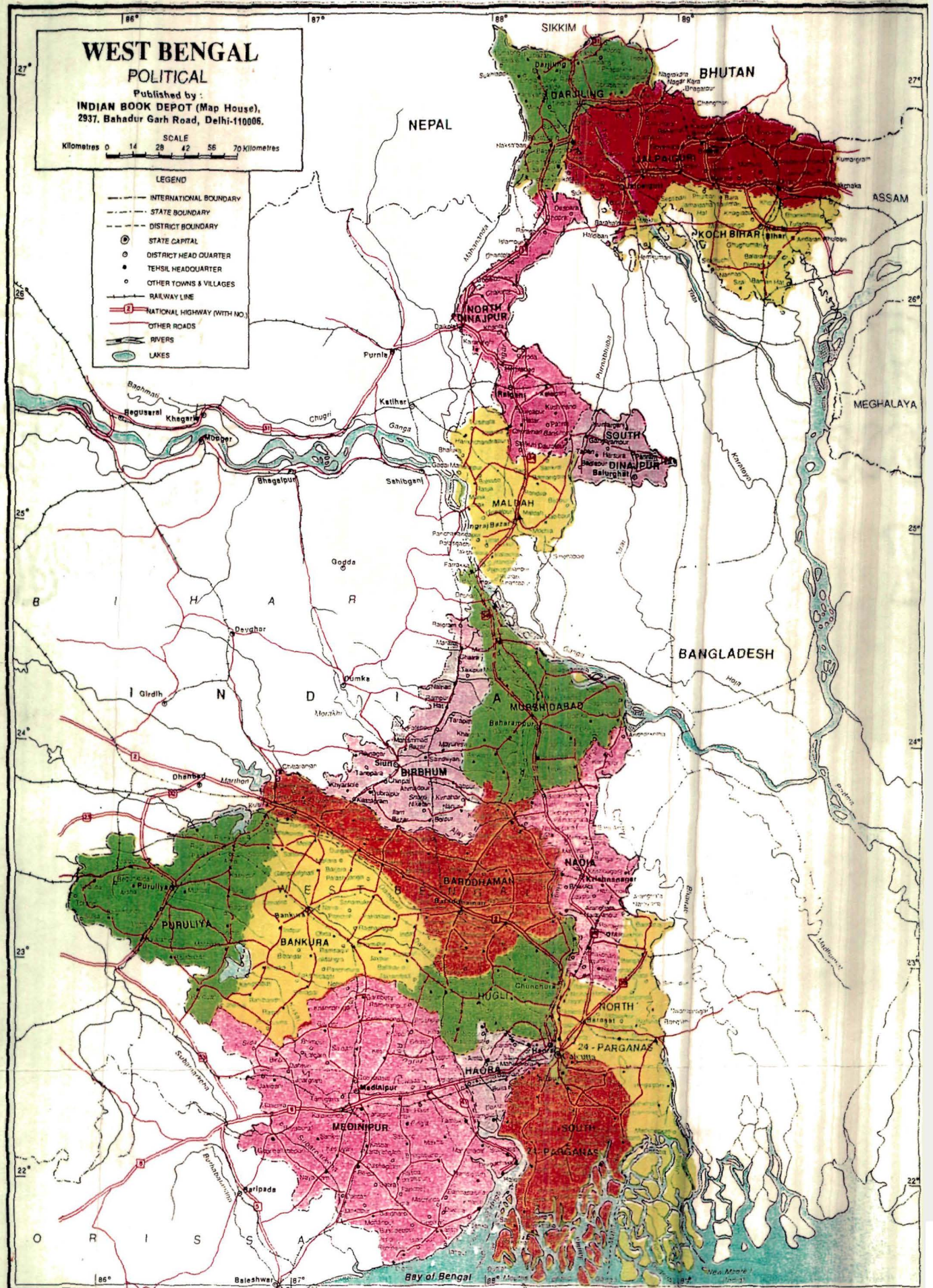
WEST BENGAL POLITICAL

Published by:
INDIAN BOOK DEPOT (Map House),
2937, Bahadur Garh Road, Delhi-110006.

SCALE
Kilometres 0 14 28 42 56 70 Kilometres

LEGEND

- INTERNATIONAL BOUNDARY
- - - STATE BOUNDARY
- - - DISTRICT BOUNDARY
- ⊙ STATE CAPITAL
- DISTRICT HEAD QUARTER
- TEHSIL HEADQUARTER
- OTHER TOWNS & VILLAGES
- RAILWAY LINE
- ② NATIONAL HIGHWAY (WITH NO.)
- OTHER ROADS
- RIVERS
- LAKES



Based upon Survey of India map with the permission of the Survey General, India. The Territorial waters of India extend into the sea to a distance of twelve nautical miles measured from the appropriate baseline. The spelling of geographical names on this map have been taken from various sources. Responsibility for the correctness of internal details on the maps rests with the Publisher. © Government of India copyright

